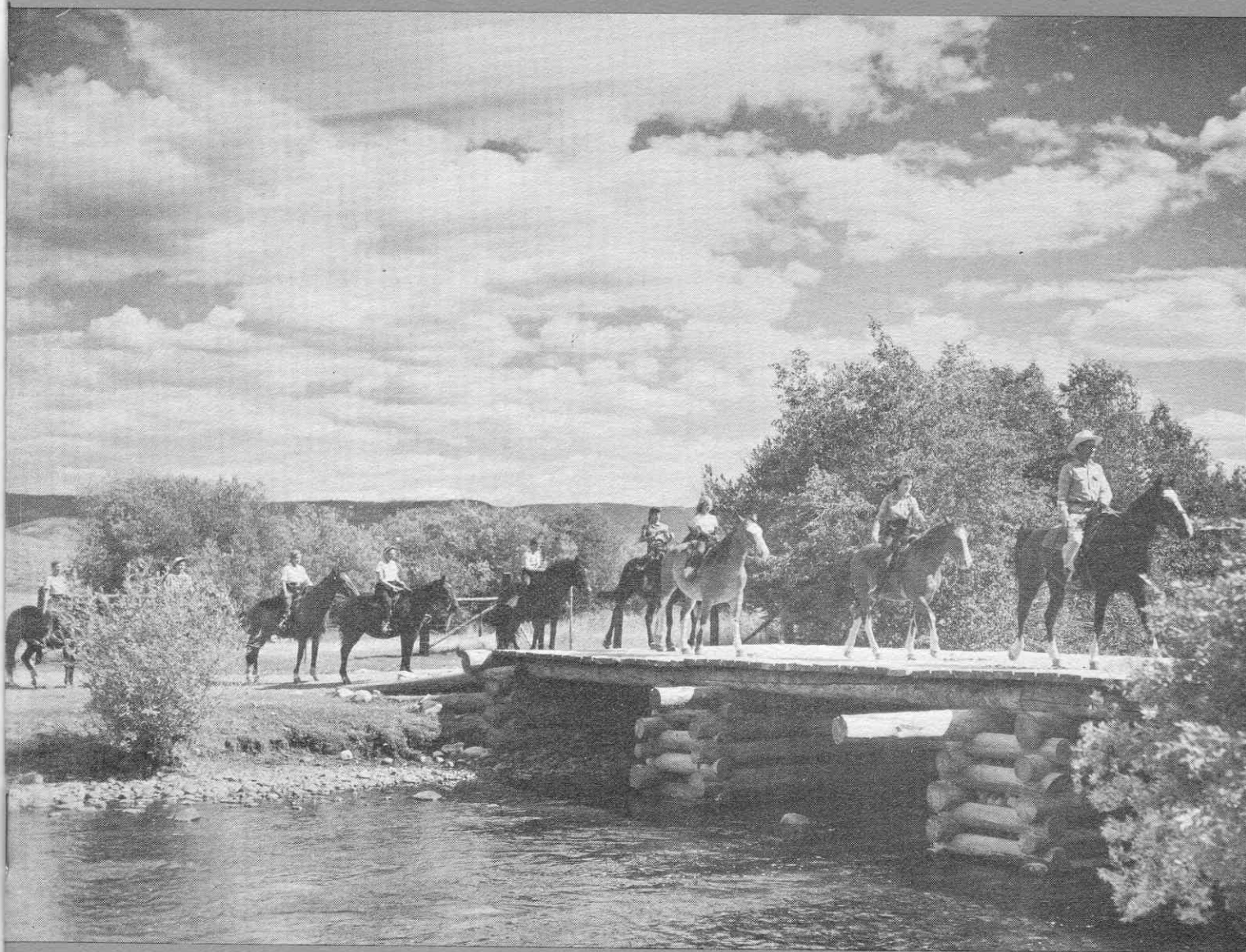


# U.T. BAR RANCH

GLENDVEY, COLORADO



*A Working Cattle and Horse Ranch*



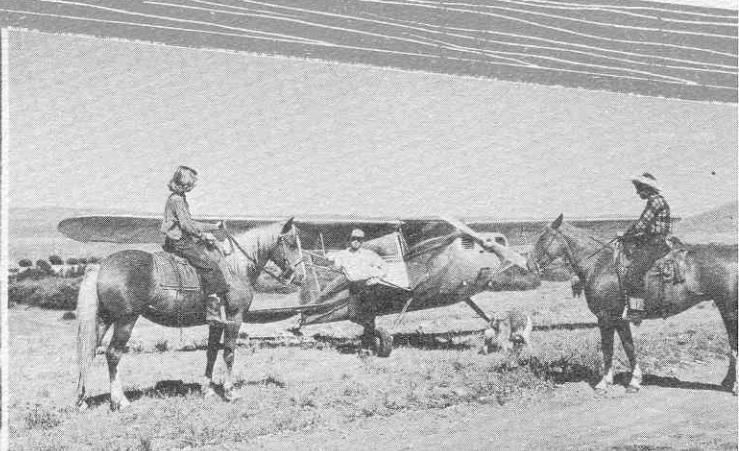
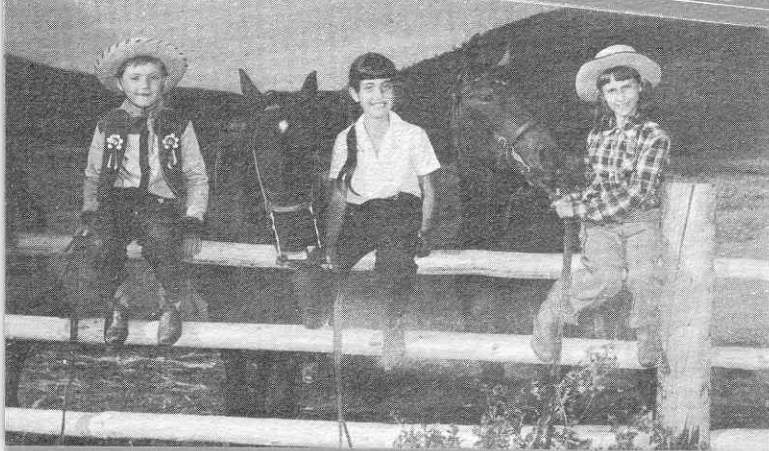
## HORSEBACK RIDING

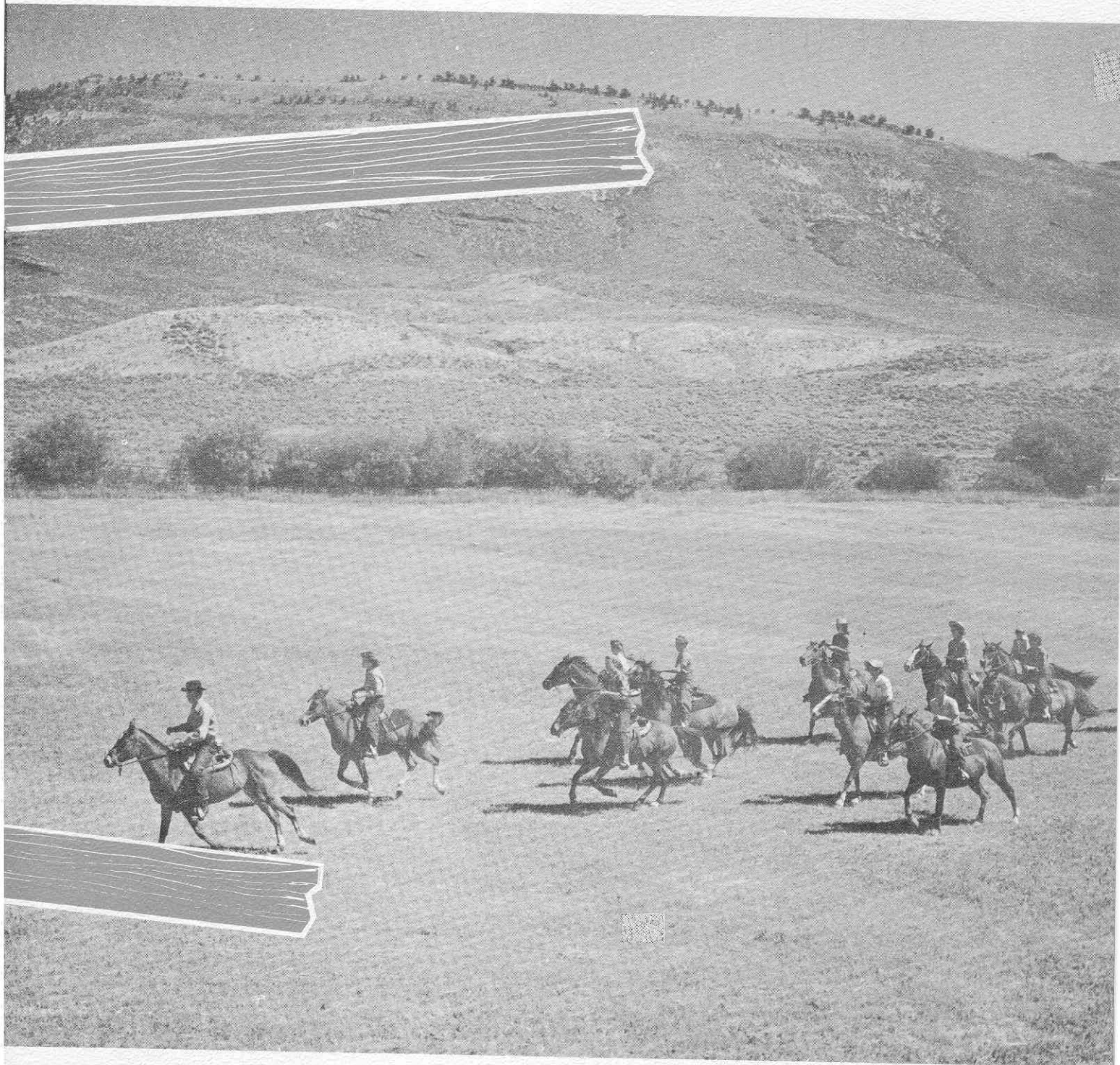


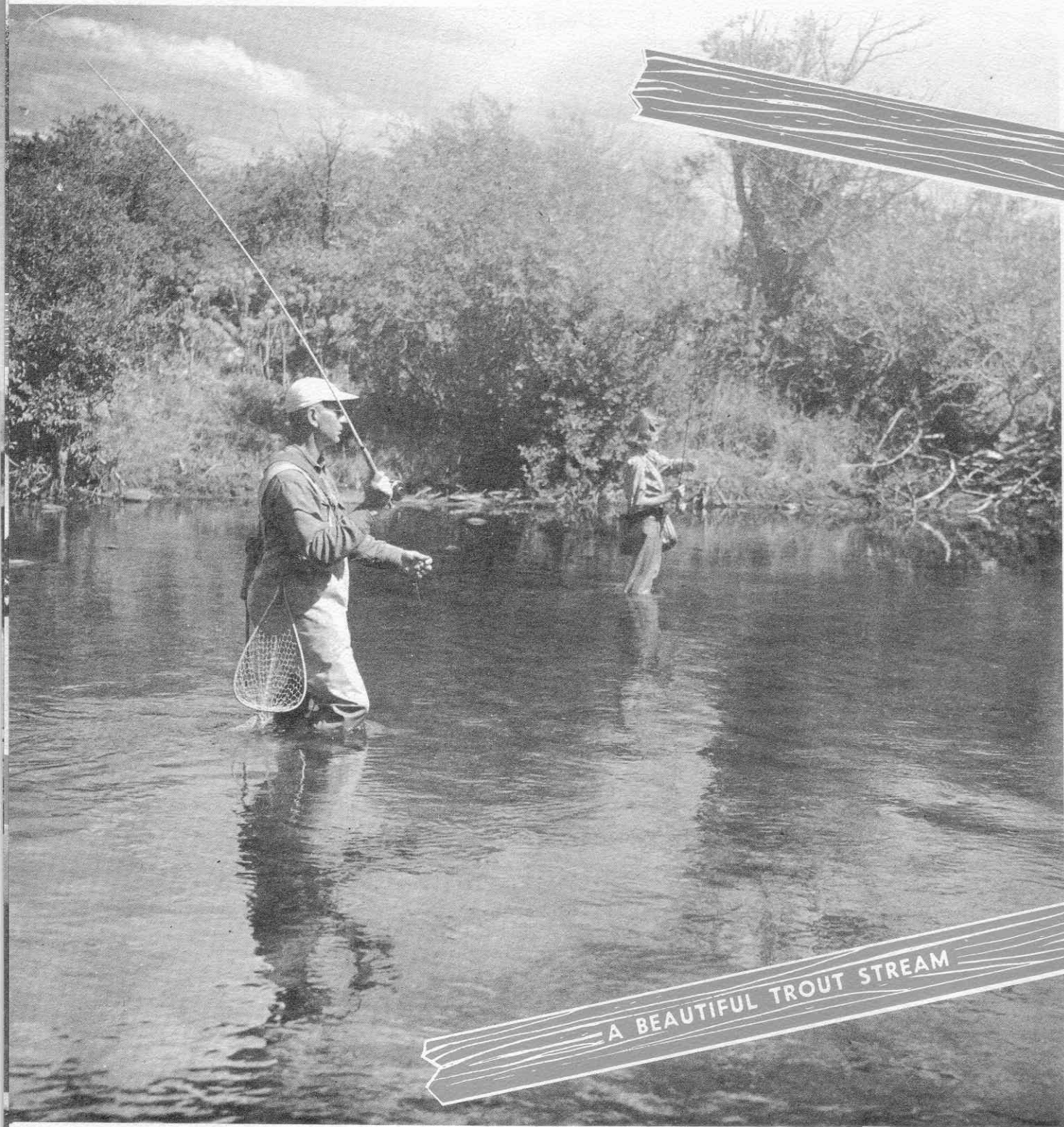
RIDING is, of course, one of the favorite activities on the ranch. At various times during the summer there is riding needed in connection with the cattle operation. Pushing cattle up to the high country on July 1 (an overnight trip), moving cattle to fresh pastures, horseback checks to see how they are doing, and finding and bringing them back to the home ranch from the Roosevelt National Forest beginning about Sept. 1. This roundup usually takes us about a month to complete. Guests are invited to join in on any of these rides if they care to go. Rides are also planned just so the guests can see our beautiful country and enjoy the rides. They usually go in small groups with a wrangler in charge to see that all goes well. We take pride in the horses we keep for use by the guests, and we can furnish you a horse to match your riding ability whether you are experienced or inexperienced as a horseman.

The setting of the ranch offers a wide variety of riding; from level grassy meadows, over rolling foothills and through pine timber up into the high country. We often take an all day ride for those who like the long trips. The groups may be split so that those who do not care to go far can have short rides morning and afternoon. On Sunday we let the horses rest.

## AS YOU LIKE IT







A BEAUTIFUL TROUT STREAM

FISHING . . . a mile and a half of the Big Laramie River runs through the middle of the ranch and you can start to fill your creel right at the cabin door. Trout at the ranch are German Brown, and usually run from 10 to 14 inches in size although larger ones are often caught. The State of Colorado also keeps three nearby lakes stocked with Rainbow Trout, and open to the public for fishing. Many of our fishermen enjoy



### BREAKFAST OUT



this lake fishing.

Back in the hills from the ranch there are places where small Brook trout usually are easy to catch, especially in late June and early July. We can take you to these places in four-wheel drive vehicles, or on horseback if this appeals to you.

Steak fries at the Teepee cooked on the large outdoor grill, fish fries and breakfasts cooked over an open fire in the mountains, or picnic lunches brought in by jeep to feed the riders on an all-day ride, are all delightful experiences you will long remember.

### OVERNIGHT PACK TRIP

